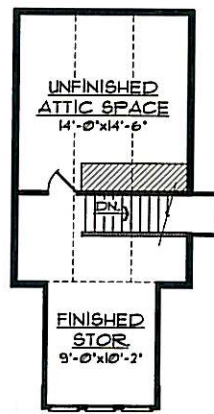
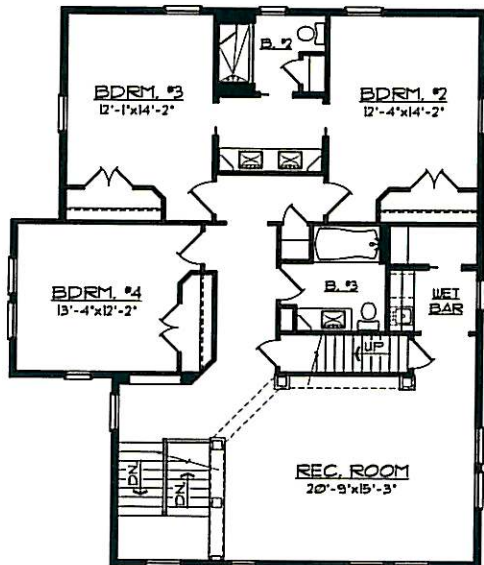
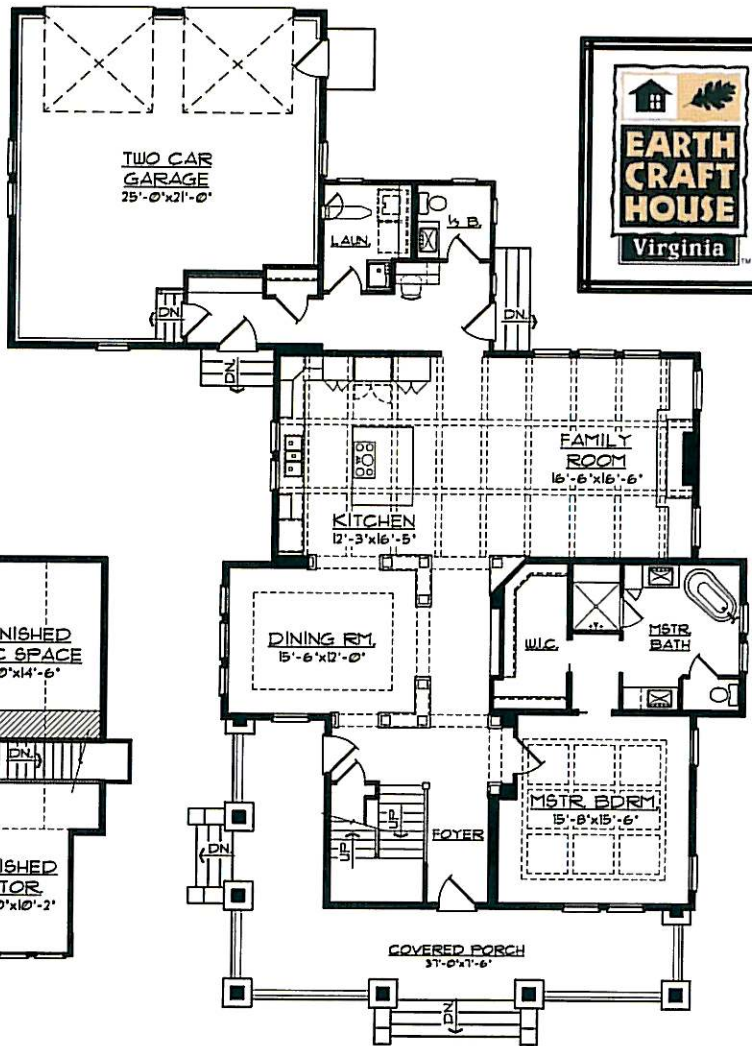
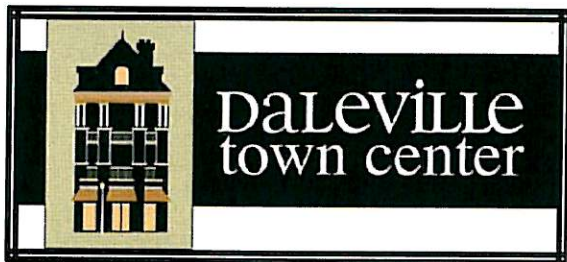


**"THE RIVER BIRCH HOUSE"**  
 'FOUR SQUARE STYLE'



SECOND FLOOR PLAN

THIRD FLOOR PLAN

FIRST FLOOR PLAN

1st. FLOOR:	1921 SQ. FT.
2nd. FLOOR:	1592 SQ. FT.
3rd. FLOOR:	195 SQ. FT.
LIVING TOTAL:	3708 SQ. FT.
GARAGE:	647 SQ. FT.
UNFIN. ATTIC:	208 SQ. FT.

\* PLANS AND ELEVATIONS SHOWN ARE A GRAPHIC INTERPRETATION AND ARE SUBJECT TO CHANGE WITHOUT NOTICE.  
 \* CONSULT BUILDERS PLANS FOR ACTUAL CONSTRUCTION DETAILS AND SIZES.



**WALDRON HOMES**  
 90 TOWN CENTER STREET, SUITE 201  
 DALEVILLE, VIRGINIA 24083  
 WWW.DALEVILLETOWNCENTER.COM TELEPHONE 540-716-7503