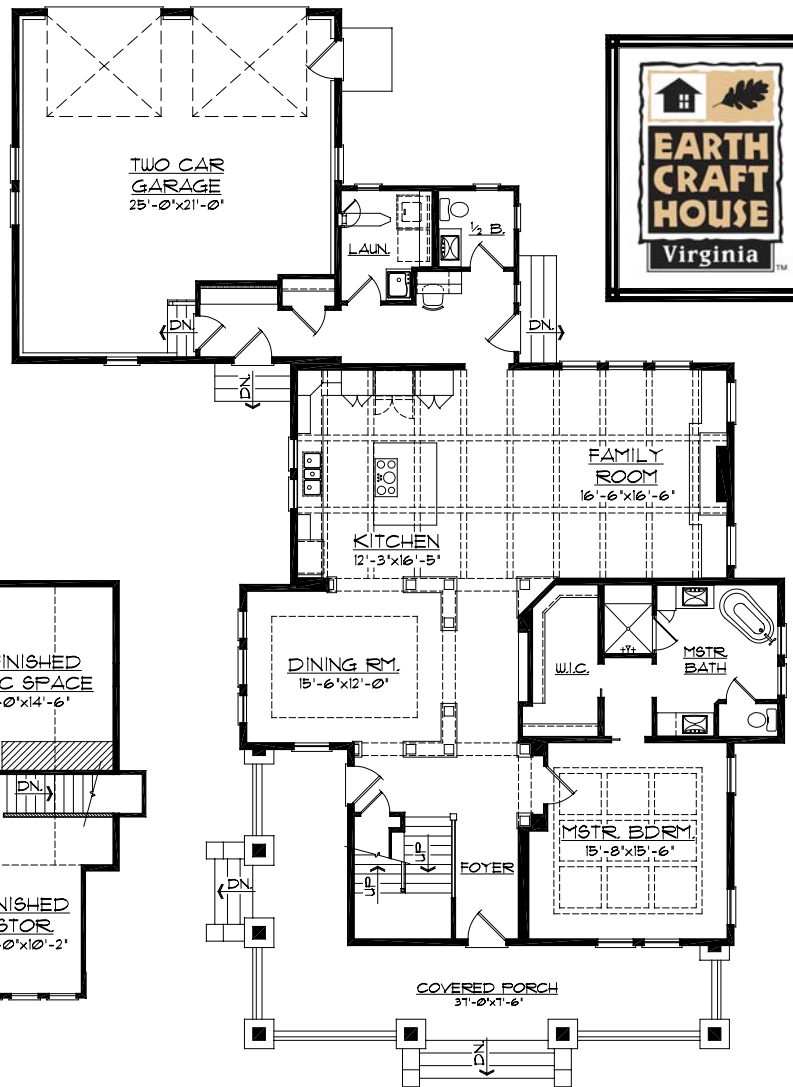
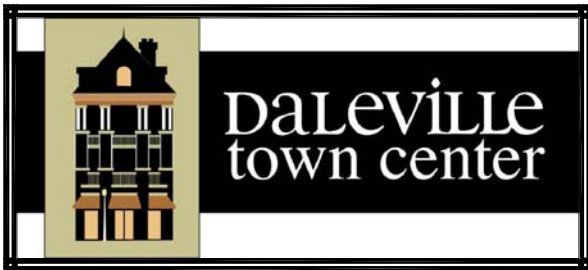
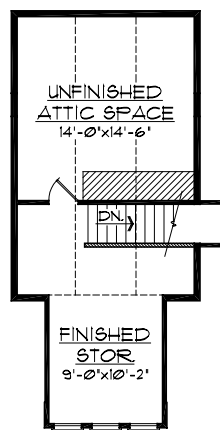




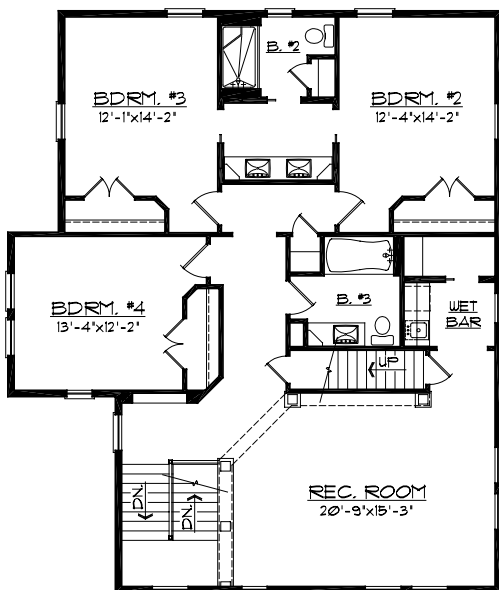
"THE RIVER BIRCH HOUSE"  
"FOUR SQUARE STYLE"



FIRST FLOOR PLAN



THIRD FLOOR PLAN



SECOND FLOOR PLAN

1st. FLOOR:	1921 SQ. FT.
2nd. FLOOR:	1592 SQ. FT.
3rd. FLOOR:	195 SQ. FT.
LIVING TOTAL:	3708 SQ. FT.
GARAGE:	647 SQ. FT.
UNFIN. ATTIC:	208 SQ. FT.

\* PLANS AND ELEVATIONS SHOWN ARE A GRAPHIC INTERPRETATION AND ARE SUBJECT TO CHANGE WITHOUT NOTICE.

\* CONSULT BUILDERS PLANS FOR ACTUAL CONSTRUCTION DETAILS AND SIZES.



**WALDRON HOMES**  
90 TOWN CENTER STREET, SUITE 200  
DALEVILLE, VIRGINIA 24083  
WWW.DALEVILLETOWNCENTER.COM TELEPHONE 540-266-1322